

STUDIO SERIES

FLAP DOOR WITH PUSH TO OPEN SYSTEM

TOP PANEL TEMPERED GLASS

FRONT DOOR WITH GLASS, WOOD DECORS OR FABRIC

CABINET WITH BASE OR WALL HANGING (WALL HANGING ONLY FOR ST 110-160)

ADJUSTABLE SHELVES FOR AV EQUIPMENT (ONLY FOR ST 160-161-200)

EASY CABLE ACCESS BETWEEN SHELVES AND SECTIONS

HIDDEN INFRARED REPEATER SYSTEM, REMOTE CONTROL FOR COMPONENTS BEHIND CABINET DOORS

IR FRIENDLY FRONT GLASS (ONLY AVAILABLE FOR "I" MODEL)

OPTIONAL BRACKET (EXCEPT ST 200)

FULLY ASSEMBLED (A) OR DISASSEMBLED (D)

ACOUSTIC FABRIC FOR AUDIO DEVICES INCLUDING CENTER SPEAKERS, SOUNDBARS

ACOUSTIC PERFORATED DOOR FOR AUDIO DEVICES INCLUDING CENTER SPEAKERS, SOUNDBARS (ONLY FOR ST 200)

ST 110

ST 160

ST 200

ST 261

ST 361

ST 111

ST 161

ST 260

ST 360

ST 362

ST 363

BODY COLORS

WHT-WHITE



BLK-BLACK



F- FLAP
I- IR FRIENDLY GLASS
T- TEXTILE
P- PERFORATED(only for ST200)

DOOR OPTIONS AND COLORS

WOOD DECOR

CWN-CASTELLO WALNUT



VIC-VICTORIA



OAK-OAK



BNW-BLACK NORTH WOOD



GNW-GREY NORDIC WOOD

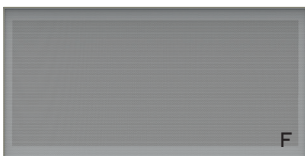


LOAK-LIGHT OAK

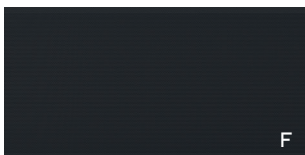


PERFORATED COLORS

WHT-WHITE

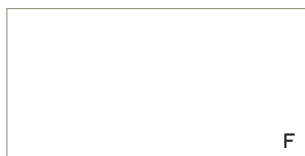


BLK-BLACK



GLASS COLORS

WHT-WHITE



BLK-BLACK



HOW (I) GLASS LOOKS

I-BLK-BLACK

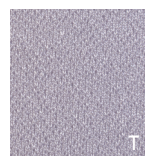


I-WHT-WHITE

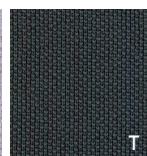


TEXTILE

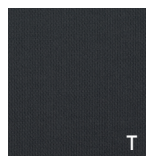
GRY-GREY



OLV-OLIVE



IRN-IRON



BLK-BLACK



NVY-NAVY



BRD-BORDEAUX

